



Stretcher Accessories

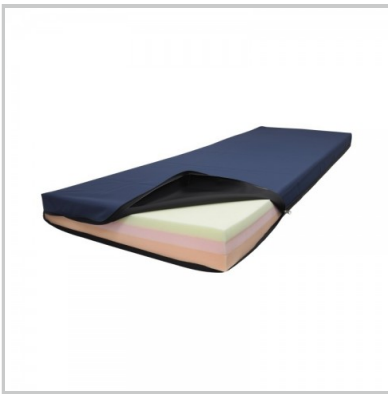
MODSEL

[modsel.com](https://www.modsel.com) ▶

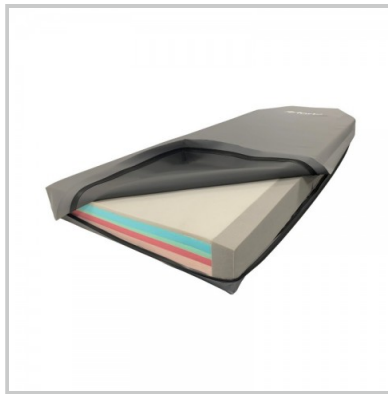


Stretcher Accessories

While each stretcher model is designed to meet standard departmental needs, we understand that operational requirements can demand additional functionality, which is why we offer a large range of accessories.



Stretcher Mattress



Premium Stretcher
Mattress



Orbit-Drive



Dropside Options



Stretcher IV Poles



Oxy Holders



Dropdown Push Handles



Document Holder



End Rail



End Board



Dropdown Foot Board



Folding Monitor Board



Folding Monitor-Foot Board



Weigh Scales



Stretcher Colour Options



Dropside Padding



Meal Tray

Stretcher Mattress

High grade mattress with excellent durability and pressure relieving comfort for patient stretchers.

Key Benefits

- Thicknesses that aid egress and imaging
- Protran mattress - single foam layer
- Premia mattress - 3 effective foam layers
- Premia Barituff mattress - 4 support layers
(110mm thick 60 - 350kg, 150mm thick 45 - 400kg therapeutic support loads)
- Welded 'double coated' stretch cover
- Non-slip base design
- Permanent care label
- New technology fluid proof zip (excludes 75mm mattress)
- MADE IN AUSTRALIA

Product Code

- 100mm Protran Mattress; MPT-CM-100-PTP
- 100mm Premia Mattress; MPT-CM-100-PRP
- 110mm Barituff Mattress; MPT-CM-110-PRB
- 150mm Barituff Mattress; MPT-CM-150-PRB

Mattress Size

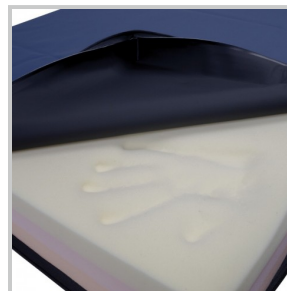
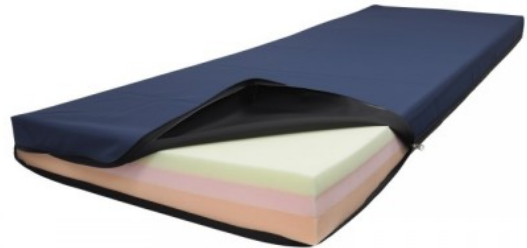
- Standard; 680 W x 1900mm L
- Narrow; 570mm W x 1900mm L
- Wide; 830mm W x 1900mm L
- Barituff; 980mm W x 1900mm L

Mattress Shape

- Square Ends (electric stretcher)
- Truncated End (hydraulic stretcher)

Why Buy

The Contour Premia mattress has been designed to optimize patient weight capacity and comfort by using a selection of quality foam layers to help in both preventing patients from bottoming and pressure reduction. The Contour Protran mattress is recommended for short stay patients with a single medium density foam section to facilitate special patient transfers or clear imaging.



Pressure care design



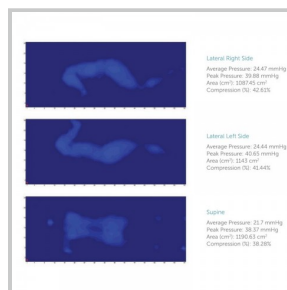
Welded cover



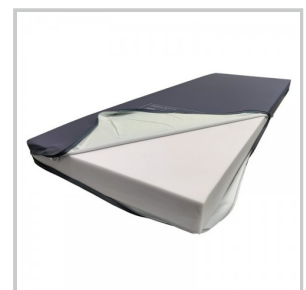
Sealed zip



Care label



Pressure mapped



Protran

Premium Stretcher Mattress

High performance mattress with outstanding durability and patient support within demanding acute environments.



Key Benefits

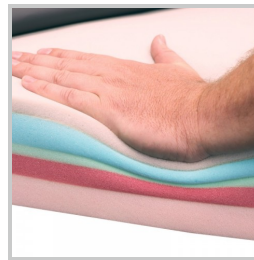
- **Crucial support:** 5-layered high performance core for demanding environments.
- **Structural stability:** Integrated profile stabilizing sides and unique hinging system.
- **Fluid control:** Double coated, welded polyurethane cover with fluid proof zip.
- **Body distribution:** Superior 110mm mattress thickness with up to 350kg mass range.
- **Peace of mind:** Australian made plus offering a 5 year core foam and 4 year cover warranty.

Premium Stretcher Mattress



Stabilizing sides

High density bars down each side help to prevent roll off and assist the patient during egress by increased side strength of the mattress.



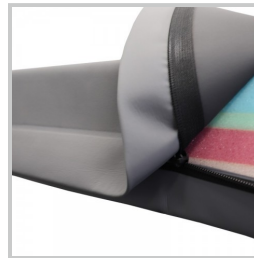
Premium pressure relief

The special combination of foam densities and layers provide superior patient support.



Profile cut sides

Strategically placed reliefs allow this thicker and denser mattress to conform to the stretcher surface contouring.



Fluid proof zip

The unique zip design seals when closed to resist fluid penetration, with the added protection of a premium waterfall flap.



Non-slip base

A specially coated base fabric helps to prevent unwanted movement of the mattress and grip the stretcher surface without requiring mechanical fastenings. This allows quick access and fast cleaning of the patient surfaces.

Why Buy

The **Premia Forte** pressure relieving radiolucent support surface is our high spec version of the standard Contour Premia mattress. The specialised core structure provides best protection to patients at risk of injury without compromising support in crucial areas. A Premiflex stretcher cover provides ultimate patient comfort and protection. This mattress delivers an effective outcome - combining both high risk pressure care and longevity for demanding stretcher applications.

Product Code

- Truncated End (hydraulic stretcher); MPT-CM-110-PRF
- Square Ends (electric stretcher); MPT-CM-110-PRPF

Mattress Size

- Standard: 680 W x 1900mm L
- Narrow: 570mm W x 1900mm L
- Wide: 830mm W x 1900mm L

Orbit-Drive

Taking patient transport to a new level in carer welfare with zero effort, 4-way power drive.



Key Benefits

- Forward, back and sideways powered drive
- Intuitive height adjustable controls with emergency stop
- Powerful electric drive centre steer wheel

Orbit-Drive



Adjustable controls

Lower the drive controls down below the mattress height for enhanced patient access and specialised accessory use.



Adaptable

Install the power drive system on many of the Contour stretcher models



Powerful drive

An electric driven wheel pressured onto the floor that provides excellent traction and center steering.



Sideways movement

The unique rotating design allows the stretcher to be driven in any direction - forwards, backwards and sideways!

Why Buy

Take all the human effort out of pushing and jostling stretchers with an intuitive and intelligent drive system designed for easy use by any operator. Natural movement controls the speed and direction of the stretcher with the ability to stop very quickly by pulling back.

Help prevent the most common carer strain injuries by taking the back twist out of moving a stretcher forwards, backwards and sideways. Importantly, we haven't overlooked safety features such as emergency stop and system lock out, which are standard. Add this system to our traditional vertical column stretcher designs such as Contour Barituff, Classic, Deluxe and Multi-X to improve both standard and Bariatric patient transport.

Product Code

- MPT-CA-EDU

Dropside Options

There are a range of dropside options available to customise any stretcher to suit your special requirements.



Key Benefits

- Multi-riser dropside options for closer spacings
- Split fold option for safer patient access
- Horizontal rail designs for longitudinal support
- Flush folding option for mattress transfer or x-ray
- Mid position lock option for easier patient access

Dropside Options



16 riser dropsides

Close up the spacing's to 100mm centers with extra risers for a safe side rail for patients requiring extra support.

Choice of folding from head end towards foot or foot end towards head (pictured).



7 riser dropsides

Close up the spacing's to 250mm centers with extra risers for a safe side rail for patients requiring extra support.

Choice of folding from head end towards foot (pictured) or foot end towards head.



Split folding dropsides

Enhance access to either the head or foot end of the patient without compromising safety.

Fold all four sections down together or independently. Supplied standard with mid-position catches.



Flush folding dropsides

Fold down the dropsides to flush with trolley top, allowing slide transfer of mattress or horizontal x-ray.

Uses the slim aluminium handrail section. Choice of folding from head end towards foot (pictured) or foot end towards head on any dropside riser configuration.



Mid-position lock

Pair of catches with a mid locking position for special access to the patient.

Choice of folding from head end towards foot (pictured) or foot end towards head. Supplied standard on split dropsides.



Deluxe dropsides

Full length glide-away siderails that provide horizontal support and a zero transfer gap.

Why Buy

We understand that there are different ways that patients must be transported and procedures performed. Safety comes first, which is why we've developed a selection of side rail options, to ensure you can have the right outcome for your department's requirements.

Product Codes

- 16 riser dropsides - MPT-CA-16RD
- 7 riser dropsides - MPT-CA-7RD
- Split fold dropsides - MPT-CA-SDS
- Flush fold dropsides - MPT-CA-FFD
- Mid position lock - MPT-CA-CMP
- Deluxe dropsides - MPT-C-D

Stretcher IV Poles

Include a standard removable or fold down IV Pole with your stretcher.

Key Benefits

- A strong and safe hook design
- Light and easy 'lift out' auto-lock hanger
- Non-rotational design to prevent tube tangling
- High strength locking for heavy loads
- Tough construction from stainless steel and nylon
- Easy 'pull-down' release from any angle
- Large 28mm diameter stand body for ease of pump mounting
- Friction retainer mount for effortless use
- Removable and permanent fold down options
- 705mm up to 1135mm total height
- 10kg weight capacity, 5kg per hook
- Only 1kg total weight

Product Code

- Standard IV Pole - MPT-CA-IVP
- Folding IV Pole - MPT-CA-FIV

Why Buy

Constructed tough from stainless steel and nylon, these clever non-rotational IV poles are designed to withstand the harshest use and make daily life easier by helping to prevent the tangling of critical soft tubing and cords. Simply lift out the hanger to any height and it automatically locks into an infinite position. Pull the lock body down from any direction to release and lower. The standard removable IV fits into all four corners of a stretcher top and stores underneath in the base if there is provision. The folding IV fits onto either end of the stretcher top and can be installed to fold down either to the left or right.



Standard IV storage



Folding IV Pole

Oxy Holders

A selection of coated stainless steel oxy bottle holders that can be mounted vertically or horizontally.

Key Benefits

- Tough, powder coated stainless steel basket construction
- Vertical basket size for up to 120mm diameter bottle; 320mm deep x 150mm wide
- A range of vertical mount positions - low, high with swivel or 45 and 90 degree fixed angles
- Horizontal basket size for up to 140mm diameter bottle; 600mm long x 180mm wide
- Horizontal basket can vary in hanging height depending on stretcher models; typically 280mm

Product Code

- Vertical Rail Mount - MPT-CA-VO2
- Vertical Corner Mount Swivel - MPT-CA-VCO2
- Vertical Corner Mount Fixed 45 - MPT-CA-VCO2-45
- Vertical Corner Mount Fixed 90 - MPT-CA-VCO2-90
- Vertical Corner High Mount Swivel - MPT-CA-VCH-S
- Vertical Corner High Mount Fixed 45 - MPT-CA-VCH-45
- Vertical Corner High Mount Fixed 90 - MPT-CA-VCH-90
- Horizontal Oxy Holder - MPT-CA-HO2

Why Buy

Due to so many wide and varied departmental requirements for specific oxy bottle sizes and positioning, we have developed a range of options. Larger bottles can be laid horizontally to ensure they are kept out of the way and smaller bottles are commonly mounted vertically. Some prefer 'fixed', non-moving positions and others require 'swinging' options that allow the bottles to be moved aside if they become an obstruction during transport. There is also the option to support bottles vertically both above and below the patient surface.



Vertical Corner Mount



Vertical Corner High Mount



Horizontal Oxy Holder



Horizontal Oxy Holder

Dropdown Push Handles

Strong fold-away handles with rubber grip for pushing the trolley.

Key Benefits

- Strong stainless steel construction
- Lift up and fold down
- Tough hygienic hand grips
- Tall head end handle option - 400mm high x 600mm wide (350mm between handles)
- Foot end handle option - 160mm high x 600mm wide (350mm between handles)

Product Codes

- Tall head end handles; MPT-CA-TDPH
- Foot end handles; PT-CA-DPH

Why Buy

To allow space for the many removable and common accessories used at the foot end of the stretcher, the handles are shorter to fold completely away with no obstruction to the accessory mounting positions. There is an option for a tall version of these handles to be mounted at the head end of the stretcher which provide high pushing points and ample clearance from the moving backrest.



Head end handles folded



Foot end handles



Foot end handles folded

Document Holder

Strong powder coated wire basket that is hung or mounted for document storage.

Key Benefits

- Ultra-tough, powder coated, 5mm steel wire construction
- External size; 390mm wide x 80mm deep x 230mm high
- Internal size; 380mm wide x 60mm deep x 225mm high
- Hang on the inside or outside of a stretcher end rail
- Wall and accessory mounting options

Product Code

- MPT-CA-DCH

Why Buy

Document holders can be used in a variety of ways for many different storage requirements. In the past we have mounted holders on either end or in special places around a stretcher, off accessories such as the dropdown foot board and even on the walls around the stretcher holding bays. We can customise sizes and designs and will work with you to ensure you can maximise department efficiency.



Removable holder

End Rail

An end rail that can help to retain the mattress, patient or be used as a push handle.

Key Benefits

- Strong, 25mm diameter coated stainless steel rail
- 600mm wide x 200mm high
- Fits into foot end or optional head end accessory sockets

Product Codes

- End rail; MPT-CA-FER
- Head end accessory sockets; MPT-CA-ASH (pair)

Why Buy

Quickly drop this rail into the accessory sockets (optional accessory on the head end of a stretcher, excludes Contour Vertex) and use it as a higher strong point to move the stretcher. This rail has a variety of additional uses such retaining a mattress or pillow from sliding off or a bar for a patients feet to push against. These rails can be used on either end of the stretcher or both ends together.



Head end option



Both ends

End Board

An end board that can help to retain the mattress, patient or be used as a higher pushing position.

Key Benefits

- Strong, 25mm diameter powder coated steel rail
- Tough, hospital grade solid plastic infill
- 600mm wide x 345mm high
- Fits into foot end or optional head end accessory sockets

Product Codes

- End board; MPT-CA-FRTI
- Head end accessory sockets; MPT-CA-ASH (pair)

Why Buy

Quickly drop this board into the accessory sockets (optional accessory on the head end of a stretcher, excludes Contour Vertex) and use it as a higher strong point to move the stretcher. This end board has a variety of additional uses such as retaining a mattress or pillow from sliding off or a flat surface for a patient's feet to push against. These boards can be used on either end of the stretcher or both ends together.



Head end option



Both ends

Dropdown Foot Board

Padded fold-down foot board to increase the length of the patient surface.

Key Benefits

- High density foam covered in welded stretch material
- Tough board construction in a one-piece hospital grade plastic
- Stainless steel lift and lock folding hinge
- 530mm wide x 330mm high (250mm high cushion)
- Adds an extra 310mm to the length of a mattress

Product Code

- MPT-CA-DDF

Why Buy

Padded for patient comfort, the removable dropdown foot board has molded handles for pushing the stretcher and with a simple 'lift and lay' action, folds down to quickly increase the length of the mattress area.



Fold down

Folding Monitor Board

A strong frame with push handles and folding board with an adjustable tie strap for retaining a monitor.

Key Benefits

- Powder coated steel frame
- Cross bars for patient feet protection
- One-piece hospital grade plastic board
- 50mm wide adjustable tie strap
- 450mm wide x 400mm deep tray surface
- 600 wide x 470mm high from mattress base
- 15kg weight capacity

Product Code

- MPT-CA-FMB

Why Buy

Add this removable monitor board accessory to the foot end of a stretcher to provide a solid push handle and fold-away board for securely mounting a monitor. The board hangs vertically out of the way and can be easily rotated outward and over to a stable, internal, horizontal rest position.



Fold over to a table



Writing surface option



Writing surface extended

Folding Monitor-Foot Board

A strong frame with both a folding foot and monitor board with an adjustable tie strap for retaining a monitor.

Key Benefits

- Powder coated steel frame
- One-piece hospital grade plastic board construction
- 600 wide x 410 deep x 540mm high overall size
- 520mm wide x 380mm deep monitor tray
- Monitor tray is 540mm high from mattress base
- 15kg weight capacity
- 50mm wide adjustable tie strap for monitors
- 500 wide x 250mm high foot board
- Adds 320mm to the length of the mattress

Product Code

- MPT-CA-FMFB

Why Buy

Add this removable monitor board accessory to the foot end of a stretcher to provide a solid push handle and fold-away board for securely mounting a monitor. The board hangs vertically out of the way and can be easily rotated outward and over to a stable, internal, horizontal rest position. Padded for patient comfort, the dropdown foot board folds with a simple 'lift and lay' action to quickly increase the length of the mattress area.



Fold over to a table



Fold down foot board



Writing surface option



Writing surface extended

Weigh Scales

Add a weigh scale system to Contour Stretchers for ease of patient measuring and tracking.

Key Benefits

- 200g accuracy
- Auto off with weight memory function
- Freeze weight to allow for additional accessories
- Excludes Contour Portare stretcher models

Product Code

- MPT-CA-WS



Easy to use

Stretcher Colour Options

A selection of colours to customise your Modsel stretchers for unique identification.

Key Benefits

- Tough extruded covers for a comfortable hand grip and bump protection.
- Used on stretcher end rails and dropside hand rails.
- Easy to replace for colour change or wear and tear.

Product Code

- Midnight Blue - MPT-CC-MB
- Flame Red - MPT-CC-FR
- Deep Violet (Purple) - MPT-CC-DV

Why Buy

Customise your stretcher end rail and dropside colours to suit your facility requirements. Our colour trims have been used in many ways such as departmental zoning between emergency, theatre and outpatients, highlighting special units such as wide top, x-ray, procedure, Bariatric or simply brightening up a children's ward.



Midnight Blue



Flame Red



Deep Violet (Purple)

Dropside Padding

Provide extra protection for recovering patients with a selection of padded bumper systems for stretcher dropsides.



Key Benefits

- Stiff board backed bumper system
- Lift and roll feature allowing use without removal
- Quick install pocket system
- 25mm high density padding
- Welded cover materials for easy cleaning
- Sizes to fit any dropside style

Dropside Padding



Padded Bumpers

Stiff plastic backed bumpers with welded stretch padding that resists high limb force.



Unique access

Lift and roll to the outside of the dropside, allowing raise and lowering without removal.

Wall hanging point incorporated for easy storage.



Padded Pockets

Tough vinyl padding on both sides of the drop sides protecting both the patient and carer.



Removable design

Unclip and quickly lift off for unrestricted patient access and easy cleaning.



Sizing options

Both bumpers and pockets can be supplied as full length versions or to fit different dropside styles.

Why Buy

A recovering or restless patient can cause themselves serious harm on the metal risers and rails of standard drop sides. We have developed some ways for the carer to quickly and easily increase the level of protection and provide a soft, padded surface for patients limbs. Our board system can be flipped to the outside of the stretcher allowing the drop sides to be raised and lowered without having to remove the bumpers from the trolley. Pockets can slide on over the drop side which are quick to use, however must be removed to lower the sides.

Product Codes

- Padded Bumpers (pair); MPT-CA-PDB-P
- Padded Pockets (pair); MPT-CA-PDB-D

Meal Tray

Tough tray constructed from fluid proof board with a patient comfort cutaway.

Key Benefits

- Clips onto the stretcher dropside rail
- Board sizes to suite narrow, standard and wide stretcher tops
- Very tough, easy to clean fluid proof design

Product Code

- MPT-CA-MLT

Why Buy

Quickly add this compact meal tray which can be supplied to clip onto the stretcher dropside. The tray is constructed of a tough, one piece medical grade board that is very easy to clean. There is a recess to ensure patient comfort. This tray can be customised to any shape or size if required.





MODSEL

modsel.com ▶