



Stretchers



Stretchers

Our stretchers and accessories are designed through direct feedback from healthcare professionals and manufactured by us, to ensure you receive a quality product that enables you to deliver the most efficient and effective patient care.



Contour E-Vertex



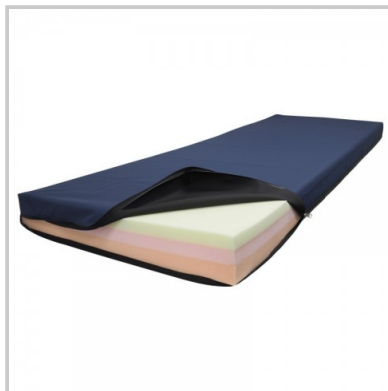
Contour Endosurge



Stretcher IV Pole



Oxy Holders



Stretcher Mattress



Dropdown Foot Board



Document Holder



End Board



Dropside Padding

Contour E-Vertex

A fully electric stretcher with effortless head positioning and comfortable access.



Key Benefits

Full flexibility: The infinitely adjustable headrest up and down tilt and excellent raise height allows the surgeon to place a patient in exactly the right position.

Safety and support: The compact, rigid locking headrest with increased leg clearance brings patients close and keeps them stable while minimizing surgeon neck and back strain.

Comfort and control: Instantly increase patient comfort and enhance access with one-touch, electronic control of the scalloped or flat cushioned headrest; and lightweight removable frame with cushions to support a pillow during recovery.

Slim and clean: The ultra-thin design hides all mechanical operation and has a one-piece, gap-free top surface for ease of cleaning and infection control.

Application

Ideal for Eye, ENT, plastics and dental care.

Why Buy?

We know precision care requires 100% confidence in the equipment being used. That's why the Contour E-Vertex combines state-of-the-art technology and ergonomic design to deliver exceptional support for the performance of procedures requiring close patient proximity, control for the practitioner and patient comfort. The slimline design of this extremely stable, rigid locking headrest provides excellent leg clearance – bringing the patient closer. While the touch button electronic positioning system* allows a surgeon or their support team to quickly, safely and precisely position a patient's head. [Also available as a procedure chair, see the Contour Recline E-Vertex here.](#) *International patents pending

Contour E-Vertex



Slim and clean

The ultra thin design safely hides all mechanical operation and has a one-piece, gap free top surface for easy cleaning.



Effortless control

A clearly marked handset infinitely positions the headrest with the touch of a button.



Raise and lower

Adjust the height up and down while remaining level.



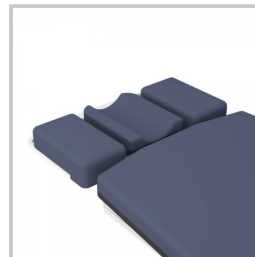
High tilt

Excellent raise height with up and down tilt adjustment.



Low tilt

A practical low height with up and down tilt adjustment.



Pillow Support option

Lightweight removable frame with cushions to help support a pillow during recovery.



Wrist Support option

Coated, 11 inches wide, height adjustable and removable rest.



Fold-back design

The wrist support flips away to allow quick and easy access to the patient.

Specifications

Size: 87 x 32 inches overall with 38 inch wide option

Height Range: 20 - 34 inches

SWL: 660Lb

Castor Size: 8 inch castors and Ezi-Track 5th wheel steering

Package Includes: 75mm premia mattress, vertical oxy holder, folding IV, USB Port, 2nd Handset, Emergency CPR Release

Product Codes

Contour E-Vertex; MPT-C-VE-E

Wrist Support; MPT-CA-OWS

Pillow Support; MPT-CA-CO-OSS

Flat Headrest Cushion; MPT-CA-FHC

Contour Endosurge

An endoscopy imaging stretcher with a sliding top for quick and easy patient positioning.



Key Benefits

- **Smooth and steady:** An advanced E-Point steering system and solid, perfectly centered steer wheel ensure the stretcher accurately tracks and turns, while maintaining a strong grip with the floor.
- **Effortless control:** Sit and position your patient comfortably and then raise them to the desired work height with the touch of a button.
- **Supercharged:** Keep things moving with long-life, cordless, fast-charge battery packs that work all day.
- **Longest warranty:** Peace of mind with a lifetime of local support, easy maintenance, and fast guaranteed parts.

v-15052024 - Page 6

Contour Endosurge



Slide to head

Unlock and move the top 5 inches towards the head end from centre position. Release the top lock and easily slide the stretcher top back or forwards to position your patient without having to significantly move the heavy C-arm machine.



Slide to foot

Unlock and move the top 10 inches towards the foot end from the centre position. Release the top lock and easily slide the stretcher top back or forwards to position your patient without having to significantly move the heavy C-arm machine.



Foot end rail

If no other end accessory is required, this is supplied standard for a convenient push handle and mattress support.

Why Buy

Take away the effort of re-positioning a heavy C-Arm X-Ray camera. For quick and easy movement of the patient, unlock the stretcher top and slide it a generous distance back or forwards. Our aim is to provide more freedom and take strain off your backs. The cutaway base cover allows more clearance for the camera under the stretcher whilst bringing it closer to the floor for a lower working height.

Product Codes

- Contour Endosurge Electric - MPT-C-EE
- Split fold dropside option - MPT-CA-SDS

Stretcher IV Pole

Include a standard removable or fold down IV Pole with your stretcher.

Key Benefits

- A strong and safe hook design
- Light and easy 'lift out' auto-lock hanger
- Non-rotational design to prevent tube tangling
- High strength locking for heavy loads
- Tough construction from stainless steel and nylon
- Easy 'pull-down' release from any angle
- Large 1.1 inch diameter stand body for ease of pump mounting
- Friction retainer mount for effortless use
- Removable and permanent fold down options
- 28 inch up to 44 inch total height
- 22Lb weight capacity, 11Lb per hook
- Only 2.2Lb total weight

Product Codes

- Standard IV Pole - MPT-CA-IVP

Why Buy

Constructed tough from stainless steel and nylon, these clever non-rotational IV poles are designed to withstand the harshest use and make daily life easier by helping to prevent the tangling of critical soft tubing and cords. Simply lift out the hanger to any height and it automatically locks into an infinite position. Pull the lock body down from any direction to release and lower. The standard removable IV fits into all four corners of a stretcher top and stores underneath in the base if there is provision. The folding IV fits onto either end of the stretcher top and can be installed to fold down either to the left or right.



Standard IV storage



Folding IV Pole

Oxy Holders

A selection of stainless steel oxy bottle holders that can be mounted vertically or horizontally.

Key Benefits

- Vertical basket size for up to 4.7 inch diameter bottle; 12.6 deep x 6 inches wide
- Horizontal basket size for up to 6.3 inch diameter bottle; 23.6 long x 7 inches wide
- Horizontal basket can vary in hanging height depending on stretcher type; typically 11 inches

Product Codes

- Vertical Rail Mount - MPT-CA-VO2
- Vertical Corner Mount - MPT-CA-VCO2
- Vertical Corner Upright Mount - MPT-CA-VCUO2
- Horizontal Oxy Holder - MPT-CA-HO2

Why Buy

Due to so many wide and varied departmental requirements for specific oxy bottle sizes and positioning, we have developed a range of options. Larger bottles can be laid horizontally to ensure they are kept out of the way and smaller bottles are commonly mounted vertically. Some prefer 'fixed', non-moving positions and others require 'swinging' options that allow the bottles to be moved aside if they become an obstruction during transport. There is also the option to support bottles vertically either above or below the patient surface.



Vertical Corner Mount



Vertical Corner High Mount



Horizontal Oxy Holder



Horizontal Oxy Holder

Stretcher Mattress

High grade mattress with excellent durability and pressure relieving comfort for patient stretchers.

Key Benefits

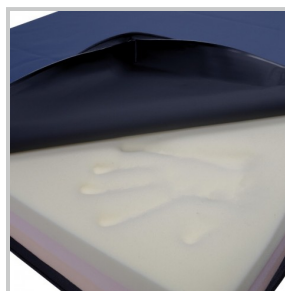
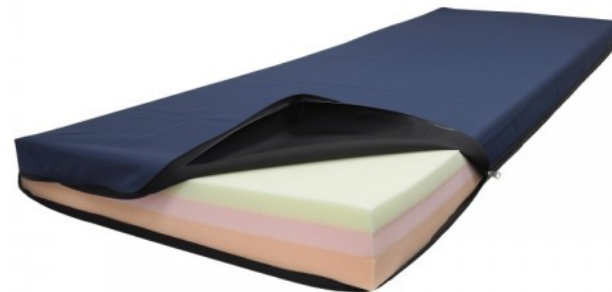
- A thickness that aid egress and imaging
- 3 effective, layered foams
- Welded 'double coated' stretch cover
- Non-slip base design
- Permanent care label
- New technology fluid proof zip

Product Code

- PT-CM-100-PRP

Why Buy

The **Contour Premia** mattress has been designed for an increased patient weight capacity and comfort by using three quality foam layers, a high density layer to assist in preventing patients from bottoming and a slow recovery, memory foam upper layer to reduce pressure. It is supplied with a quality welded, stretch and fluid proof cover with permanent label to assist in caring for the mattress.



Pressure care design



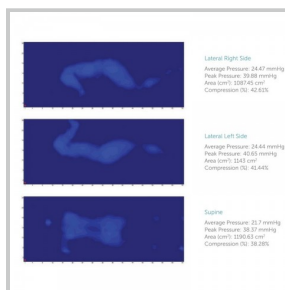
Welded cover



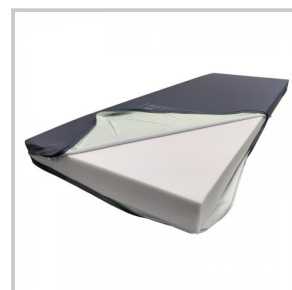
Sealed zip



Care label



Pressure mapped



Protran

Dropdown Foot Board

Padded fold-down foot board to increase the length of the patient surface.

Key Benefits

- High density foam covered in welded stretch material
- Tough board construction in a one-piece hospital grade plastic
- Stainless steel lift and lock folding hinge
- 21 wide x 13 inches high (10 inch high cushion)
- Adds an extra 12 inches to the length of a mattress

Product Code

- MPT-CA-DDF

Why Buy

Padded for patient comfort, the removable dropdown foot board has molded handles for pushing the stretcher and with a simple 'lift and lay' action, folds down to quickly increase the length of the mattress area.



Fold down

Document Holder

Strong powder coated wire basket that is hung or mounted for document storage.

Key Benefits

- Ultra-tough, powder coated, 0.19 of an inch steel wire construction
- External size; 13 inch wide x 3 inch deep x 9 inch high
- Internal size; 15 inch wide x 2 inch deep x 9 inch high
- Hang on the inside or outside of a stretcher end rail
- Wall and accessory mounting options

Product Code

- MPT-CA-DCH

Why Buy

Document holders can be used in a variety of ways for many different storage requirements. In the past we have mounted holders on either end or in special places around a stretcher, off accessories such as the dropdown foot board and even on the walls around the stretcher holding bays. We can customize sizes and designs and will work with you to ensure you can maximize department efficiency.



Removable holder

End Board

An end board that can help to retain the mattress, patient or be used as a high pushing position.

Key Benefits

- Strong, 1 inch diameter powder coated steel rail
- Tough, hospital grade solid plastic infill
- 24 inch x 13 inch high
- Fits into foot end or optional head end accessory sockets

Product Codes

- End board; MPT-CA-FRTI
- Head end accessory sockets; MPT-CA-ASH (pair)

Why Buy

Quickly drop this board into the accessory sockets (optional accessory on the head end of a stretcher, excludes Contour E-Vertex) and use it as a higher strong point to move the stretcher. This end board has a variety of additional uses such retaining a mattress or pillow from sliding off or a flat surface for a patients feet to push against. These boards can be used on either end of the stretcher or both ends together.



Head end option



Both ends

Dropside Padding

Provide extra protection for recovering patients with a selection of padded bumper systems for stretcher dropsides.

Key Benefits

- Stiff board backed bumper system
- Lift and roll feature allowing use without removal
- Quick install pocket system
- 1 inch high density padding
- Welded cover materials for easy cleaning
- Sizes to fit any dropside style

Product Codes

- Padded Bumpers (pair); MPT-CA-PDB-P
- Padded Pockets (pair); MPT-CA-PDB-D

Why Buy

A recovering or restless patient can cause themselves serious harm on the metal risers and rails of standard dropsides. We have developed some ways for the carer to quickly and easily increase the level of protection and provide a soft, padded surface for patients limbs. Our board system can be flipped to the outside of the stretcher allowing the dropsides to be raised and lowered without having to remove the bumpers from the stretcher. Pockets can slide on over the dropside which are quick to use, however must be removed to lower the sides.



Padded Bumpers



Unique access



Padded Pockets



Removable design



Sizing options

Notes
